

PowerLogic ION EEM 2012 Releases

ION EEM 4.0 and 4.0 R2

October 2012

Mike Schmitz, ION EEM Offer Manager



PowerLogic ION EEM

Schneider Electric has released two new versions of EEM in 2012.

ION EEM v4.0 includes an enhanced UI, new modeling features and other significant enhancements.

ION EEM v4.0 R2 builds on this release by optimizing the analytics algorithms and user workflows to improve the responsiveness, scalability and performance of the system.

2012

ION EEM 4.0:
March 2012

- and -

ION EEM 4.0 R2:
North American Launch:
October 19, 2012

PowerLogic ION EEM

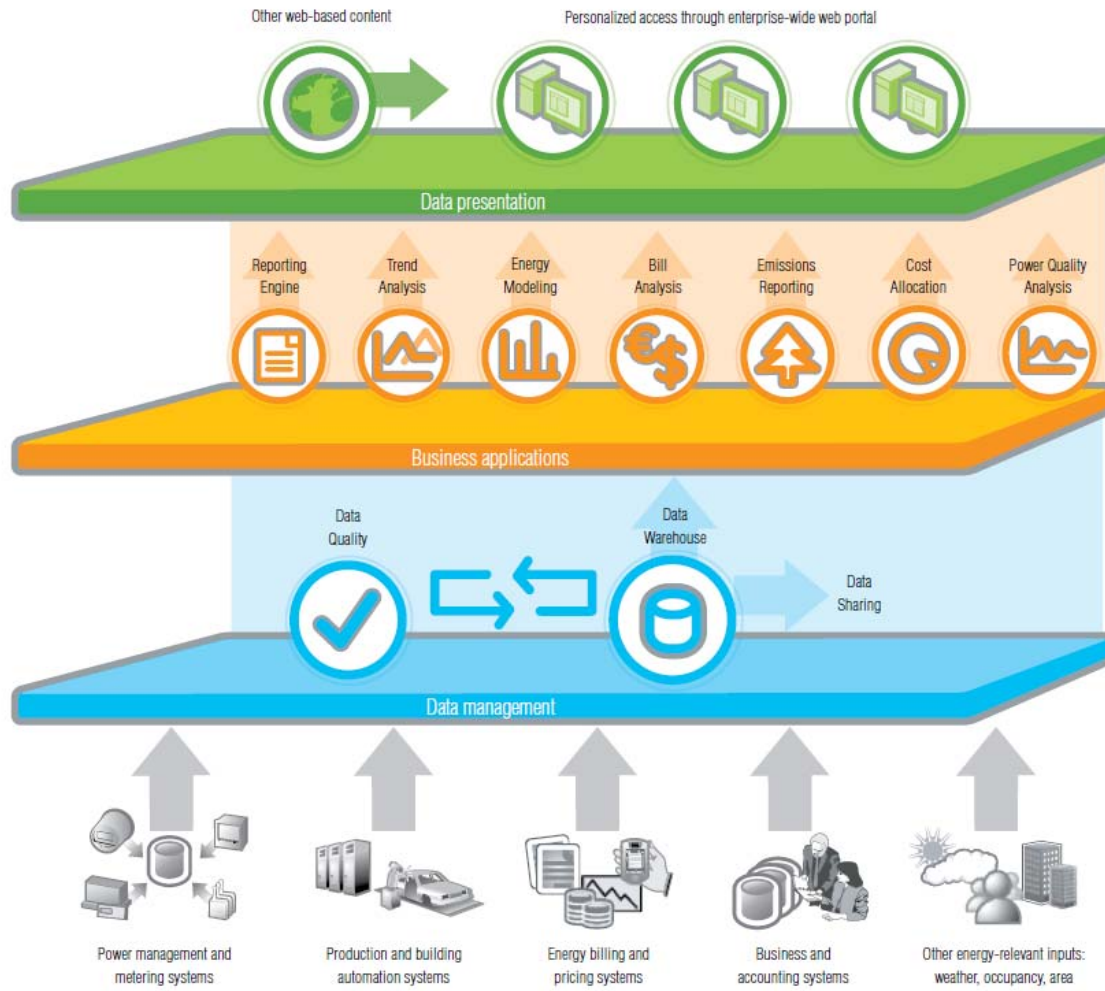
Summary:

New Features

- > UI refresh and workflow optimization
- > Fully Redesigned Energy Modeling Interface
- > Advanced Visualization Module
- > New features: Trend reports, configurable dates, dashboard sharing
- > Improved system performance and scalability
- > Microsoft operating system and database system updates

Solution Layers

Enterprise software platform



Presentation:

- Analytics: IE 7, 8 and 9
- AVM: all browsers + iPad

Modules:

- Improved scalability
- Faster workflows
- More efficient analytics

Data Platform:

- 64-bit compatibility
- SQL Server 2008 R2
- Windows Server 2008 R2

EEM 4.0 and 4.0 R2 Releases

NEW FEATURES

NEW: User Interface

• Cleaner UI design

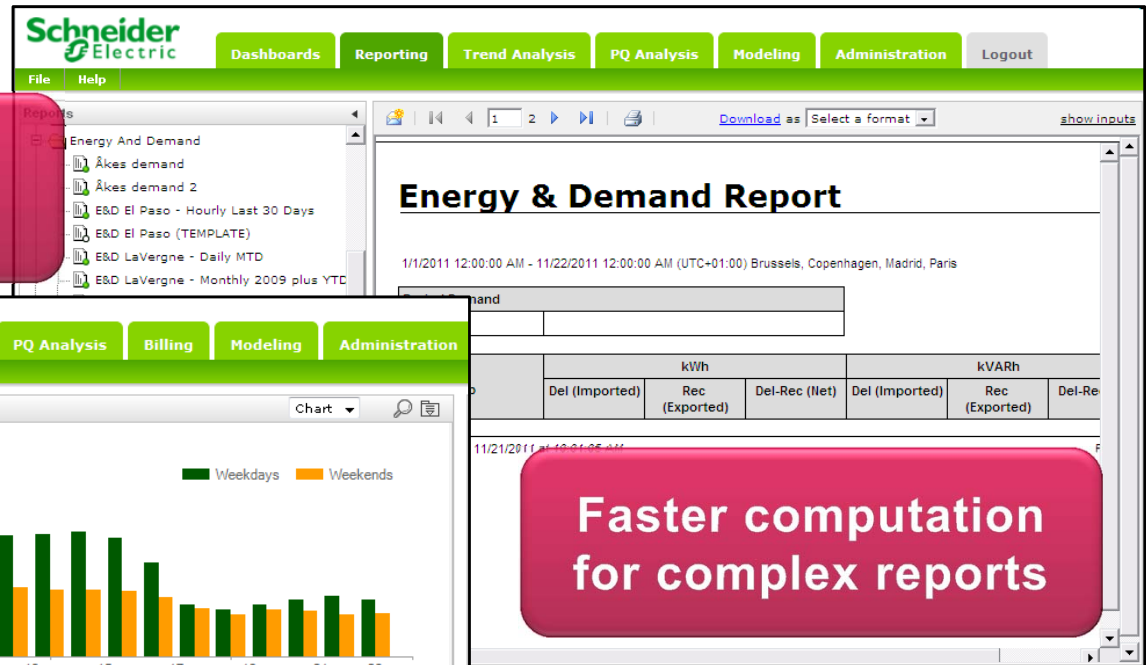
• Modernized color scheme

• All new modeling UI

Parameter	Type	R ²	Adjusted R ²	CV-RMSE
Constant	Constant	0.942269	0.933889	6.992186
Slope	Nashville/Model Coefficient for 2004	51.0137	16.3351	3.08140
X1	Nashville/Model Coefficient for 2005	47.2024	18.8995	2.49750
X2	Nashville/Model Coefficient for 2006	34.3289	4.43237	7.74510
X3	Nashville/Model Coefficient for 2007	9.62724	4.11960	2.33690

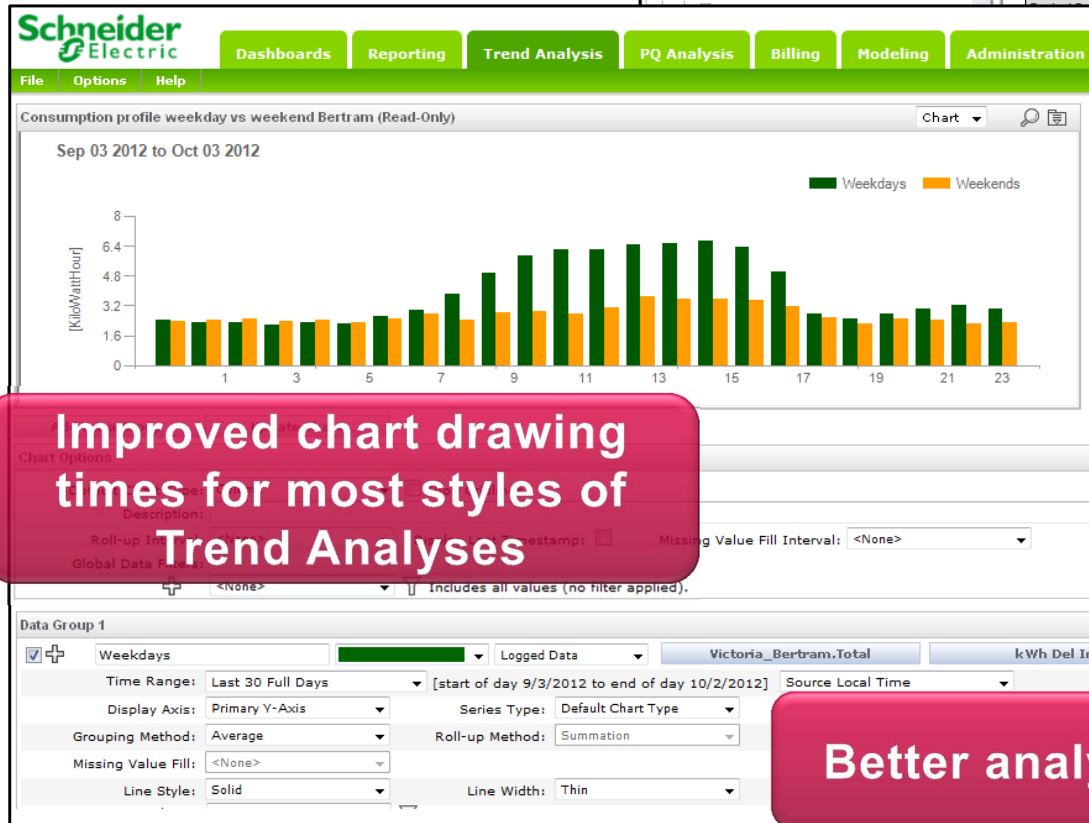
NEW: Workflow Enhancements

Smoother navigation within the application



Faster computation for complex reports

Improved chart drawing times for most styles of Trend Analyses

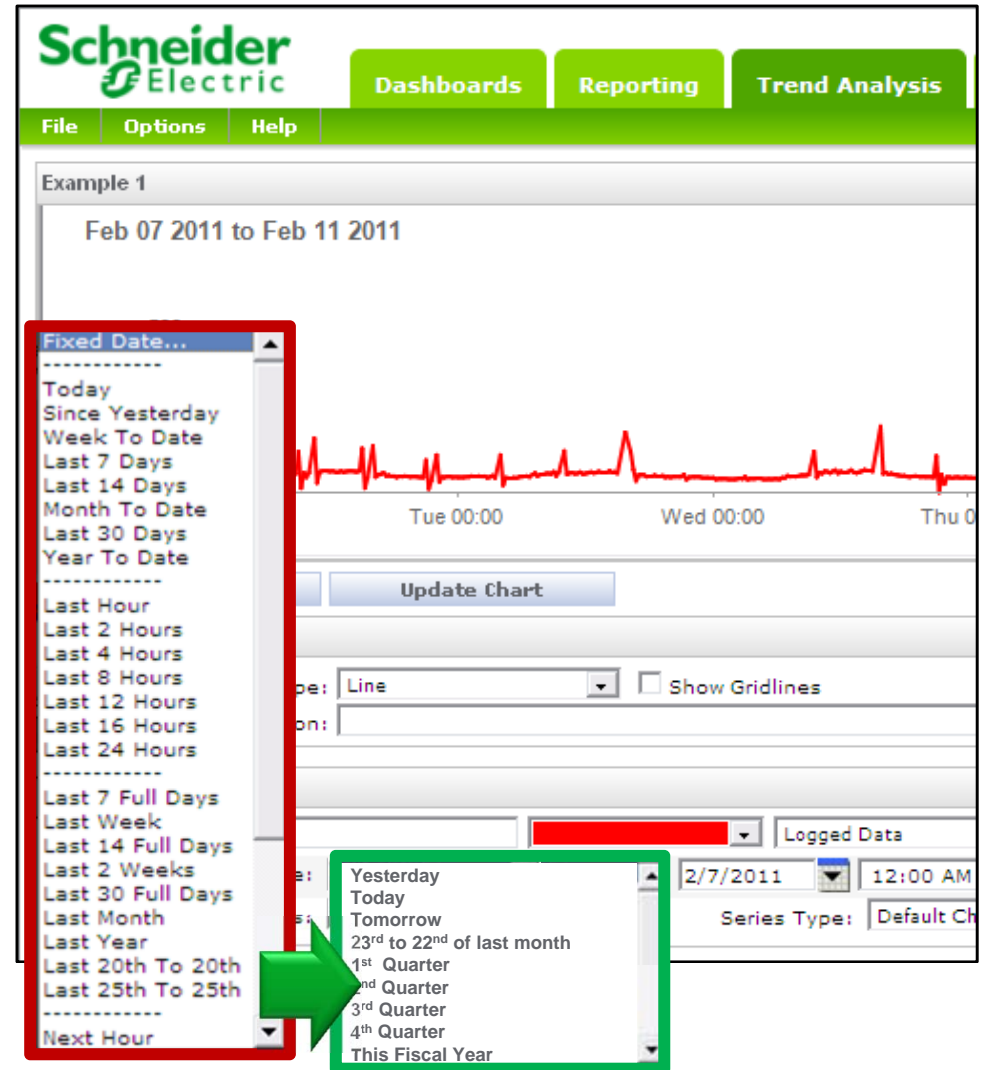


Better analytics workflow

NEW: Configurable Date Ranges

Focus on Relevant Dates

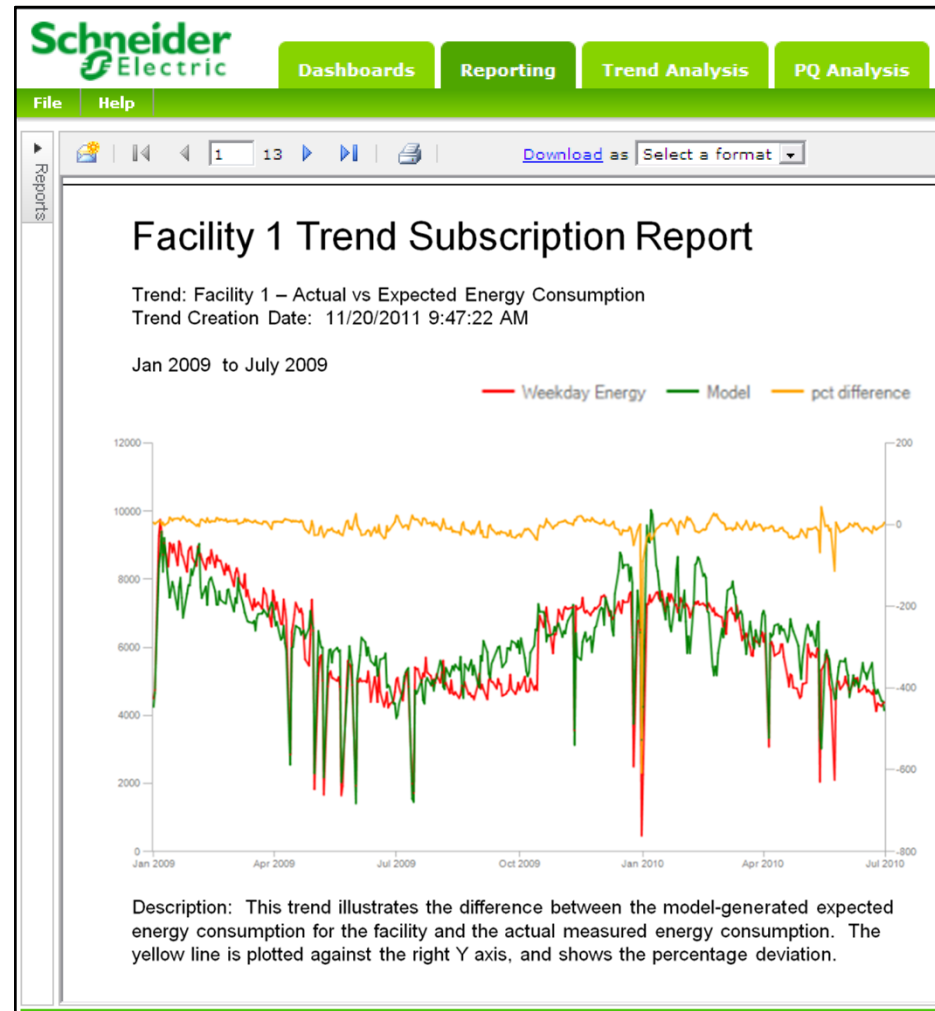
- Use only the time ranges relevant to your organization
- Define specific ranges, for example:
 - Your utility billing period, the 23rd of the month, to the 22nd of the following month
 - Your fiscal year: Sept 1 to Aug 31
- Quickly tailor your queries to the times that matter to you.



NEW: Scheduled Trends

Trend-Based Reports

- Turn an ad-hoc Trend Analysis page into a report
- Run the report on a schedule
- Email copies to key people
- Push your findings to non-system users



NEW: Dashboard Sharing

Pick and Choose the best content, then share it!

- Select from any user-created dashboard in the system
- Copy from one user to any other
- Roll out dashboard upgrades to users or groups

The screenshot displays the 'Manage Dashboards' interface in the Schneider Electric system. The interface is divided into four main sections:

- Load Dashboards for user(s):** A list of users from User 1 to User 13, each with a checkbox.
- Dashboard page(s) to Manage:** A list of dashboard pages: Primary Facility Overview, Main Floor KPIs, 2nd Floor KPIs, 3rd Floor KPIs, Regional Rankings, and Corporate Summary. The 'Corporate Summary' checkbox is checked.
- Copy Options:** Two radio buttons: 'Copy to User(s)' (selected) and 'Copy to Group(s)'. Below them, there are two checkboxes: 'Grant permissions for all destination users for the report items contained in the copied Dashboard(s)' (checked) and 'Overwrite all existing Dashboards for the selected destination user(s) or group(s)' (unchecked).
- User(s) to receive copied Dashboards:** A list of users from User 1 to User 13, with checkboxes for User 3 through User 9 checked.

Buttons at the bottom include 'Load Dashboard list', 'Delete Dashboard(s)', and 'Copy Dashboard(s)'. A red callout box with white text is overlaid on the interface, stating: 'Let power users share their analytic skills'.

EEM 4.0 and 4.0 R2 Releases

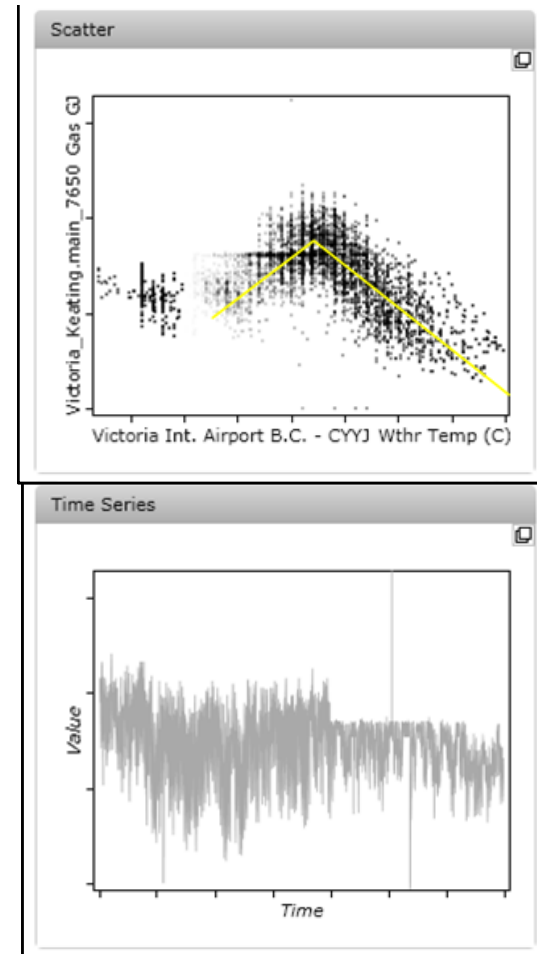
ENERGY MODELING UPDATE

Energy Modeling Module Enhancements

Major Update:

Energy Modeling Usability

- Totally new workflow
- Improved data visualization
- Supports IPMVP style Measurement and Verification
- Create *targets* as well as *models*



Energy Modeling: UI Updates

ION EEM | Dashboards | Reporting | Trend Analysis | PQ Analysis | Billing | Administration

Help

Configure Model Input Parameters | [Back to Manage Models](#)

Step 1: Basic Model Information

Name:

Description:

Step 2: (Optional) Select any Roll-up or Grouping options to apply to the input data before it is modeled

Data Roll-up Resolution:

** This option allows input data to be rolled-up before being used in the model, which can help lower 'noise' in the data but can also drastically change the model's accuracy.*

Sub-model Grouping: Includes all values (no filter applied).

** This option will enable sub-models. These are independant models that are only active during a given set of time (i.e. Selecting 'Day of Week' will create up to 7 models: Monday, Tuesday, etc)*

Step 3: Select the Source/Measurement Pair you wish to Model

Modeled Variable:

Step 4: Select the Source/Measurement Pair(s) that will influence the Model

Primary Driver:

Step 5: Select the method in which this model will be created

Create a model automatically by analyzing existing ION EEM Data Create a model by manually entering the required parameters

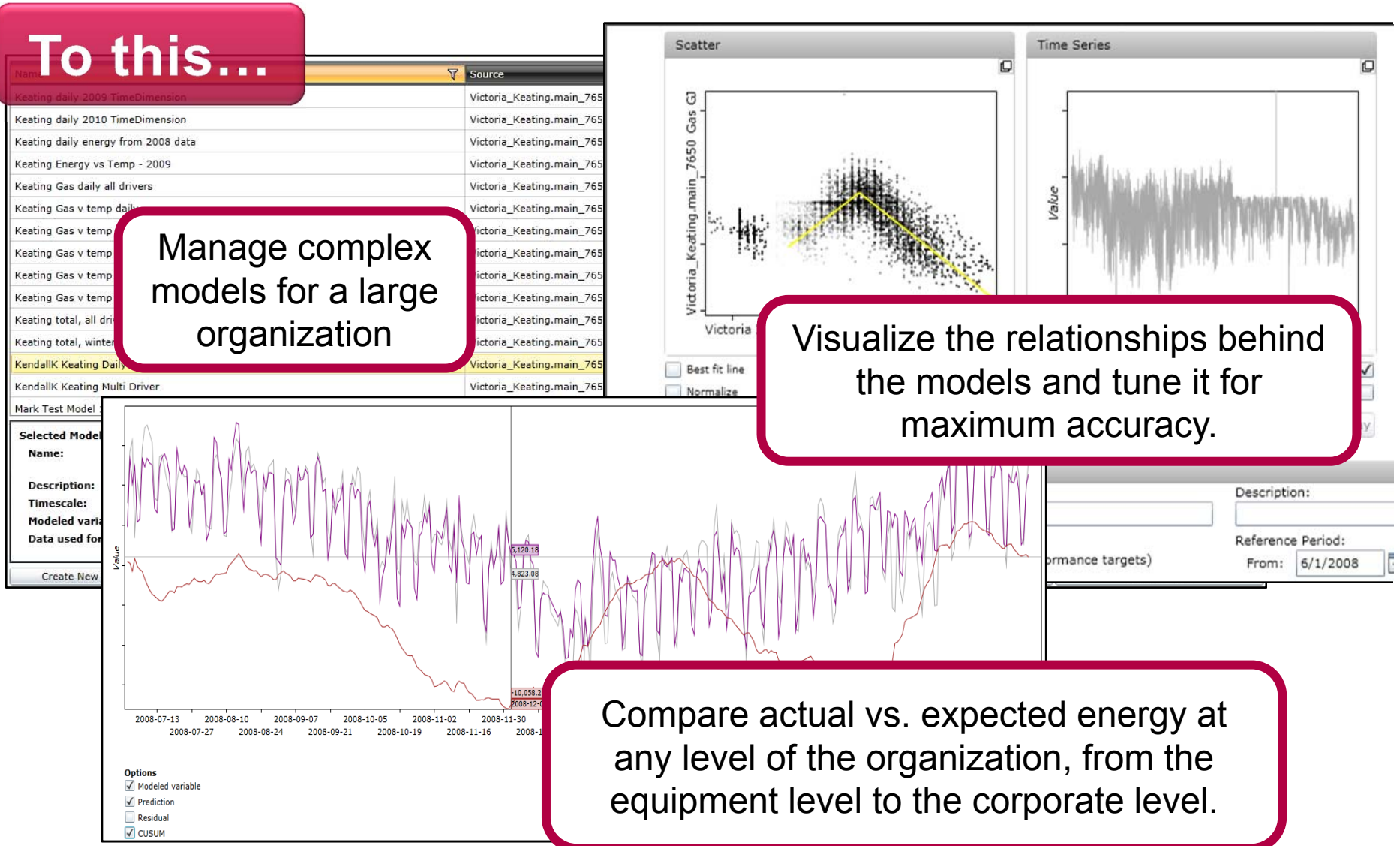
Energy Modeling: Advanced Features

To this...

Manage complex models for a large organization

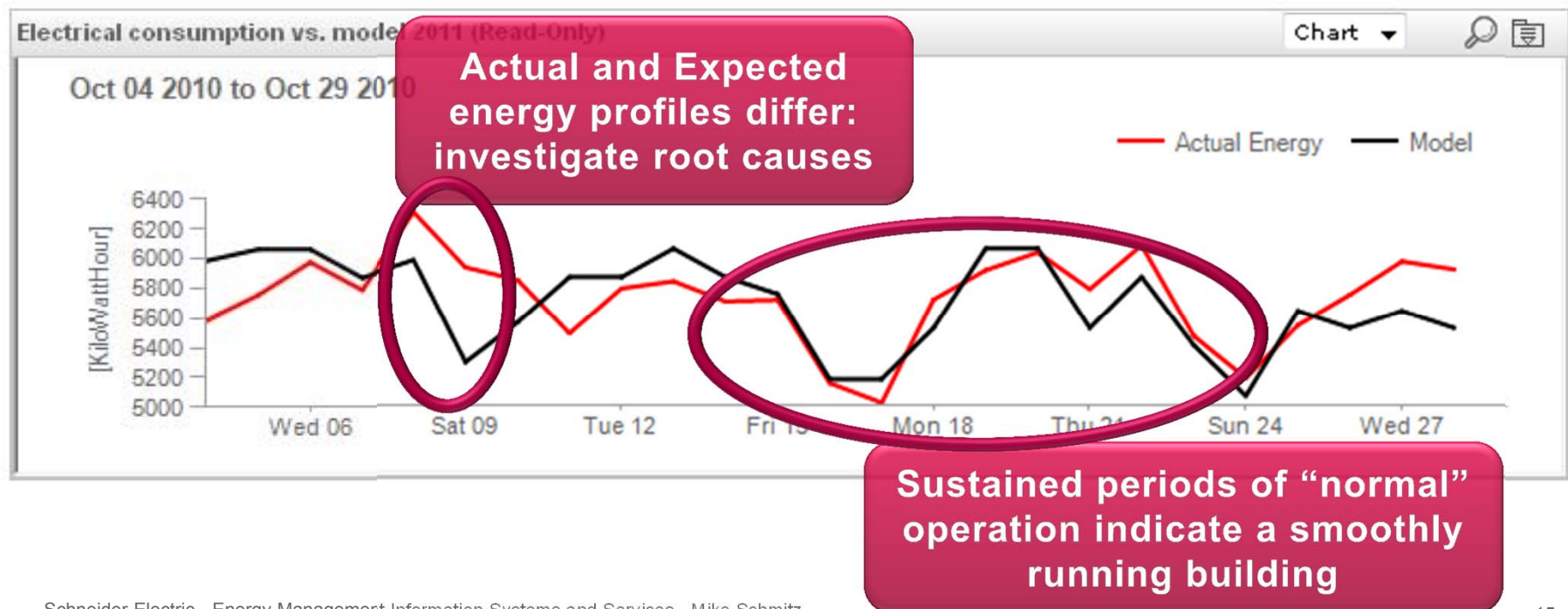
Visualize the relationships behind the models and tune it for maximum accuracy.

Compare actual vs. expected energy at any level of the organization, from the equipment level to the corporate level.



Energy Modeling: Goals

- Build accurate baselines for your buildings
- Remove the effects of weather to reveal true performance
- Flag unexpected changes in your operation's efficiency
- Measure the savings gained by your Energy Conservation Measures



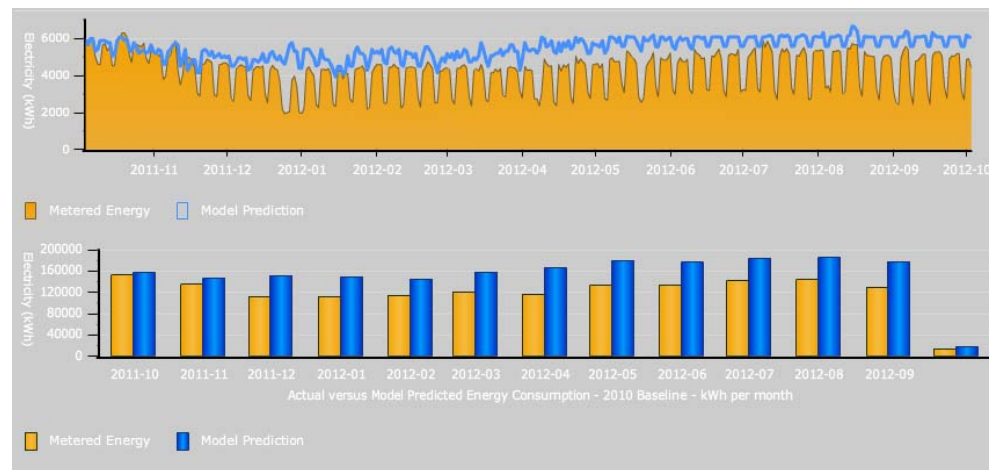
EEM 4.0 and 4.0 R2 Releases

ADVANCED VISUALIZATION

Advanced Visualization Module

(US and Canada only)

- Toolkit designed to provide cutting-edge graphics visualization to EEM
- Energy data comes alive in meaningful ways, driving behavior change and decision making
- Makes each ION EEM project a showcase



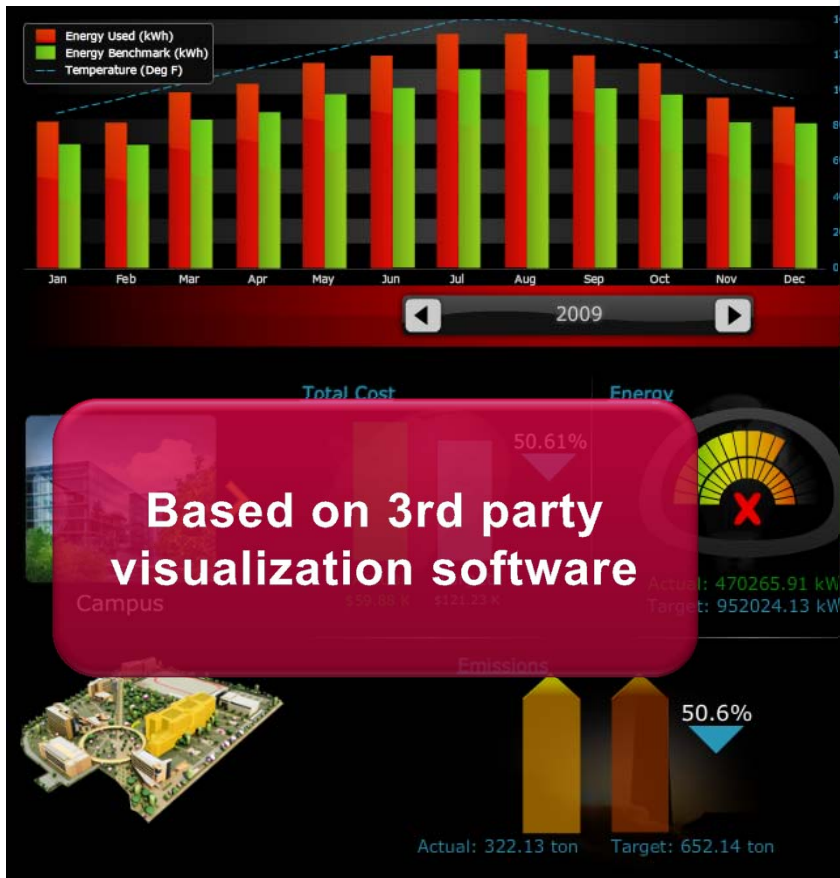
Advanced Visualization Module

(US and Canada only)

- **Plug and Play:** Simple install (no need for complex configuration)
- **Accessible:** Runs in any flash enabled browser (IE, Safari, Firefox, Chrome, etc..)
- **Flash-Based:** Includes dynamic effects such as drag-and-drop, tool-tips, animations.
- **Codeless implementation:** use widgets, views, behaviors and image properties for all animation
- **Lightweight:** no additional software to install or databases to manage

Advanced Visualization Module

(US and Canada only)



Advanced Visualization Module

(US and Canada only)

The screenshot displays the 'Advanced Visualization Module' software interface. The central area features a 3D architectural rendering of a campus with three buildings labeled 'building 1', 'building 2', and 'building 3'. To the left, a 'Prophet Tree' sidebar shows a hierarchical structure of assets, including 'ACME Corporation', 'San Diego Campus', 'San Francisco Campus', 'Building 1', 'Building 2', 'Los Angeles Campus', 'BOE Building', and 'EPO'. Below this, a 'Building 1' metrics panel lists various data points such as 'Billing Power (1 hr) (kW)', 'Current Node', 'DCiE (%)', and 'Emissions - Auto Fuel (gal)'. The main view includes several data dashboards: a 'South Campus' facility status panel showing 'Capacity: 14,400', 'Occupancy: 9,311', and 'Occupied: 73%'; a 'work' dashboard with a 3x3 grid; and a 'lighting' dashboard with a gauge for 'lighting demand' at '0 kW' and a 'total lighting demand' gauge at '380 kW'. A bottom toolbar contains icons for 'work', 'HVAC', 'occupancy', 'running costs', 'equipment runtime', 'lighting', 'energy', 'CO2', and 'summary'. On the right, a 'Quadratic Bezier' settings panel is visible, showing options for 'Enable', 'Select type' (Solid Fill), 'Color' (33CCFF), 'Alpha' (0.2), and 'LINE STROKE' settings.

Tightly integrated with the EEM database and existing Trend Analyses

Expose the power of EEM analytics within a highly flexible display engine

PowerLogic ION EEM
2012 Releases

Questions?

Presented by: Michael Schmitz, ION EEM offer manager
Michael.Schmitz@schneider-electric.com

